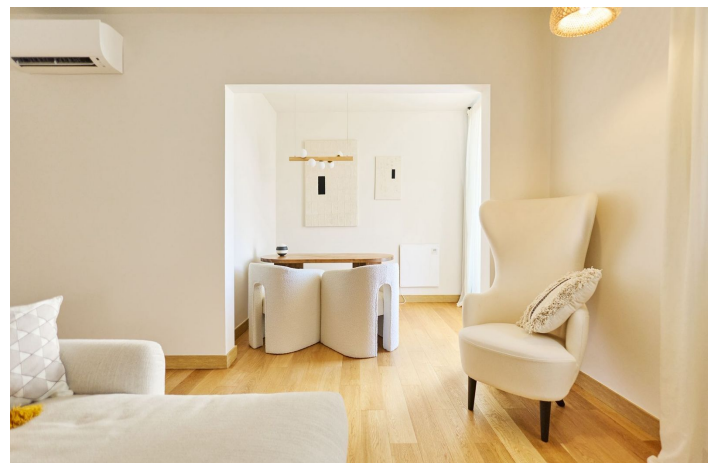
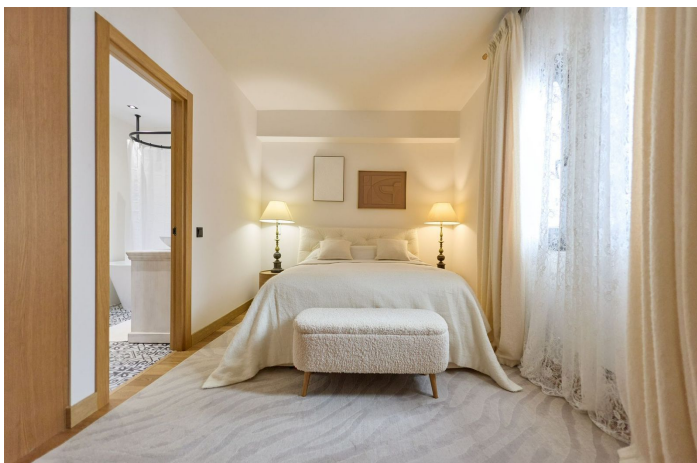




# Middle Floor Apartment for sale in Puerto Banús, Marbella

**1,100,000 €**

Reference: R5339173 Bedrooms: 2 Bathrooms: 2 Build Size: 118m<sup>2</sup> Terrace: 10m<sup>2</sup>





## Costa del Sol, Puerto Banús

Elegant Renovated 2-Bedroom Beachfront Apartment with Sea Views – Playas del Duque, Puerto Banús, Marbella  
Discover this sophisticated and fully renovated 2-bedroom apartment in the iconic Playas del Duque – one of the most exclusive beachfront communities on the Golden Mile, right in the heart of Puerto Banús marina.  
With 118 m<sup>2</sup> of bright, south-facing living space and a glazed terrace that seamlessly connects indoor and outdoor areas, this property offers the perfect blend of comfort, style and Mediterranean lifestyle.

### Key Features

- 118 m<sup>2</sup> built | 113 m<sup>2</sup> useful
- 2 generous bedrooms (both with en-suite bathrooms)
- Bright living-dining room with large folding windows opening onto a glazed terrace
- Modern fully equipped kitchen
- Small open balcony with partial sea views
- Fitted wardrobes
- Air conditioning + individual heat pump heating
- Underground parking space included
- Built 1975 – completely renovated with premium finishes

### Residence Amenities

- 24/7 concierge and security
- 3 communal swimming pools
- Tropical landscaped gardens
- Gym and private restaurant
- Direct beach access

### Prime Location

Step out of the lift and you're on the famous Paseo Marítimo. Moments from Dalí sculptures, the Old Town, luxury boutiques, world-class restaurants and exclusive beach clubs. Quick access to Puerto Banús marina and all services. Ideal as a permanent residence, holiday home or high-yield investment in one of Marbella's most coveted beachfront addresses.

Viewing highly recommended – contact us today to arrange a private viewing!



## Features:

### Features

Covered Terrace  
Lift  
Near Transport  
Private Terrace  
Ensuite Bathroom  
Marble Flooring  
Double Glazing  
Gym  
Fitted Wardrobes  
WiFi  
Fiber Optic  
Restaurant On Site  
Access for people with reduced mobility  
Domotics  
Jacuzzi  
Near Church  
Tennis Court

### Views

Panoramic  
Garden  
Urban  
Courtyard

### Pool

Communal  
Children`s Pool

### Garden

Communal  
Landscaped

### Category

Luxury  
Beachfront

### Orientation

South

### Setting

Commercial Area  
Beachside  
Close To Port  
Urbanisation  
Close To Sea  
Close To Shops  
Close To Schools  
Town  
Close To Marina  
Beachfront  
Port  
Marina  
Front Line Beach Complex

### Furniture

Fully Furnished

### Security

Gated Complex  
24 Hour Security  
Alarm System  
Entry Phone

### Climate Control

Air Conditioning

### Condition

Excellent  
Recently Refurbished  
Recently Renovated

### Kitchen

Fully Fitted

### Parking

Underground  
Garage  
Private  
Covered